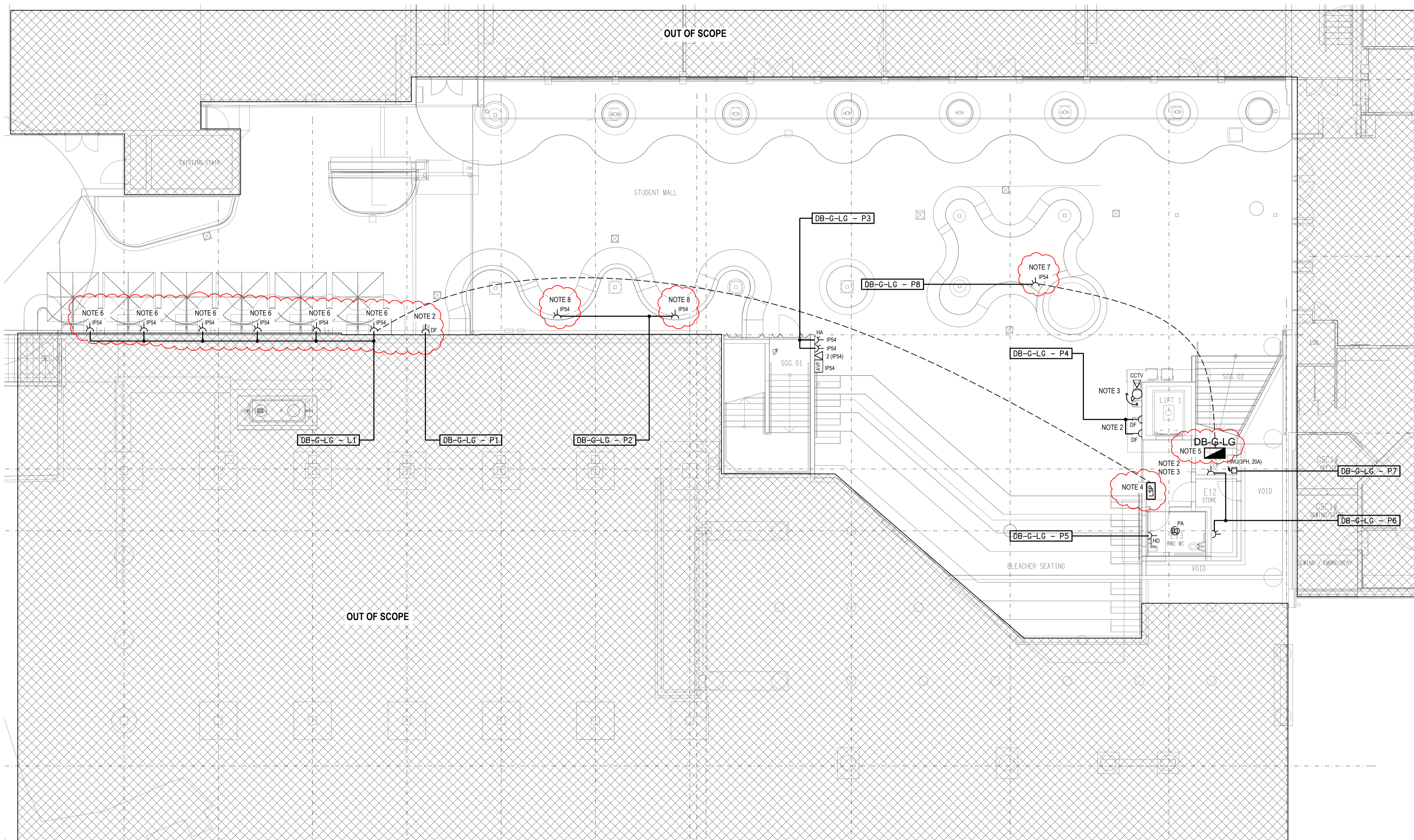


**NOTES:**

1. REFER TO DRAWING E01 FOR LEGEND AND GENERAL NOTES
2. POWER SUPPLY FROM DB-G-G LOCATED ON GROUND LEVEL. PROVIDE CONDUITS CAST IN SLAB FROM DISTRIBUTION BOARD TO THE OUTLETS.
3. PROVIDE COMMUNICATIONS CONDUITS CAST IN SLAB FROM THE GROUND FLOOR G BLOCK COMMUNICATIONS RACK TO THE OUTLETS.
4. LOCKABLE SWITCHING PANEL (LSP) TO CONTROL HIGH-BAY LIGHTING & OVER-RIDE GENERAL LIGHTING AND LOUVERS
5. SUPPLY & INSTALL NEW DB-G-LG FED FROM DB-G SURFACE MOUNT TO BLOCK WALL
6. POWER OUTLETS FOR UMBRELLA LIGHTING CONTROLLED VIA PE CELL AND TIMER WITH OVER-RIDE SWITCH FUNCTION

**NOTES:**

7. POWER SUPPLY FOR PUMP & SWITCHED SUPPLY FOR POND LIGHTING VIA TIMER OR OVER-RIDE SWITCH
8. 2 x IP54 SERIES OUTLETS INSTALLED WITHIN SEATING AREA



B	INFORMATION	30/11/2023
REV:	DESCRIPTION:	DATE:

**ELECTRICAL DESIGN GROUP**  
ELECTRICAL BUILDING SERVICES CONSULTANTS

BRISBANE: P.O. Box 15 Sherwood Qld 4075  
Phone: (07) 3278 4375  
Email: brisbane@edg.net.au  
Web: www.edg.net.au

ELECTRICAL DESIGN GROUP BRISBANE PTY LTD  
ACN 092 710 793

TRADING AS:  
ELECTRICAL DESIGN GROUP

PROJECT:  
**LOURDES HILL COLLEGE  
STAGE 1**

SITE ADDRESS:  
86 HAWTHORNE ROAD,  
HAWTHORNE, QUEENSLAND

SCALE: 1:100 SHEET SIZE: AT A1

DRAWING TITLE:  
**ELECTRICAL SERVICES  
STAGE 1A LOWER GROUND  
FLOOR PLAN**

PROJECT NO. DRAWING NO. REVISION:  
**C3134a E13 B**